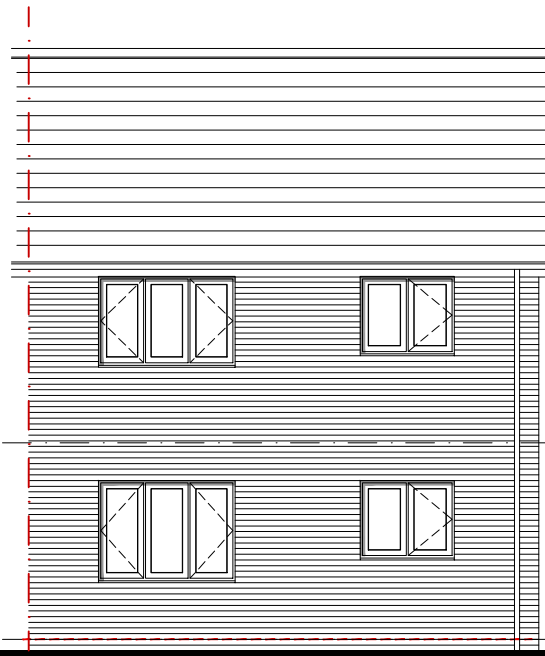
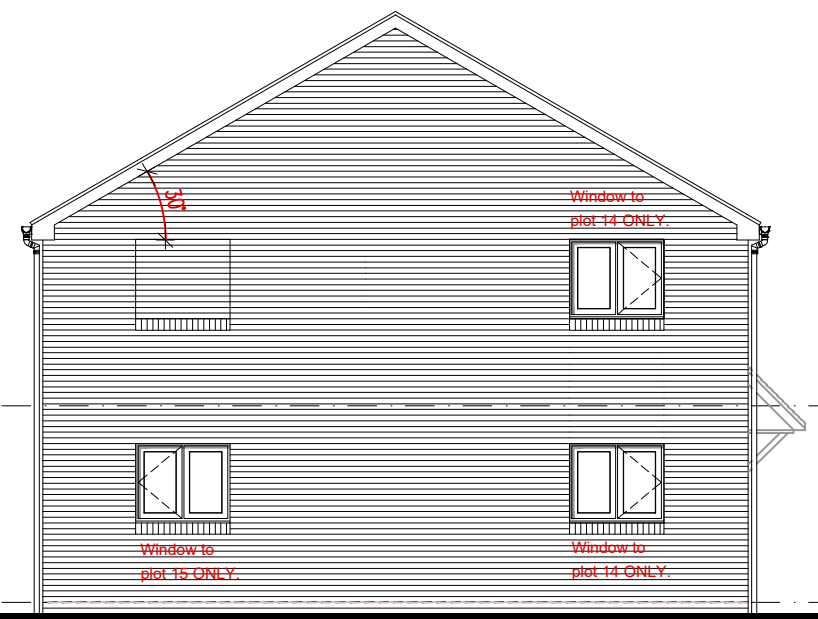




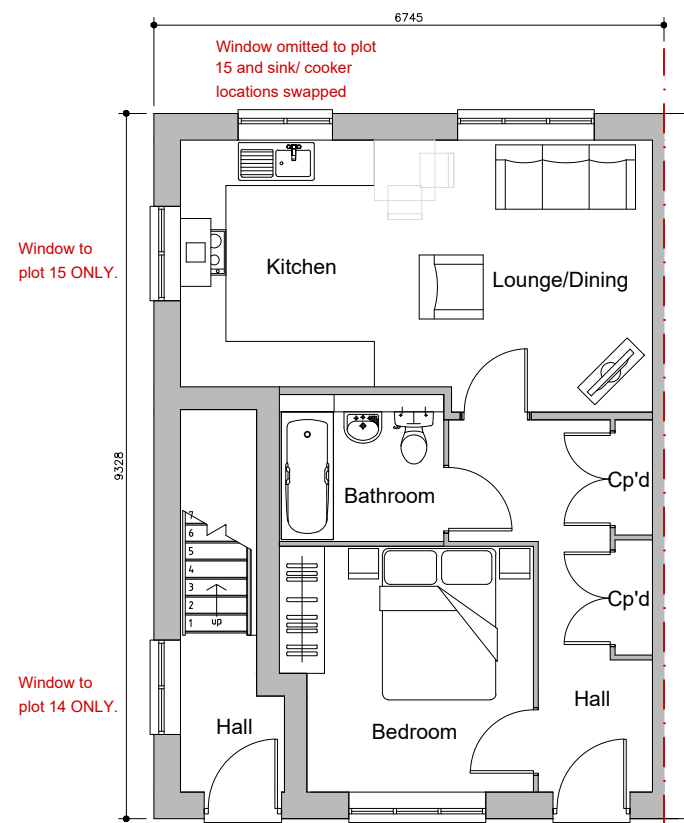
Front Elevation



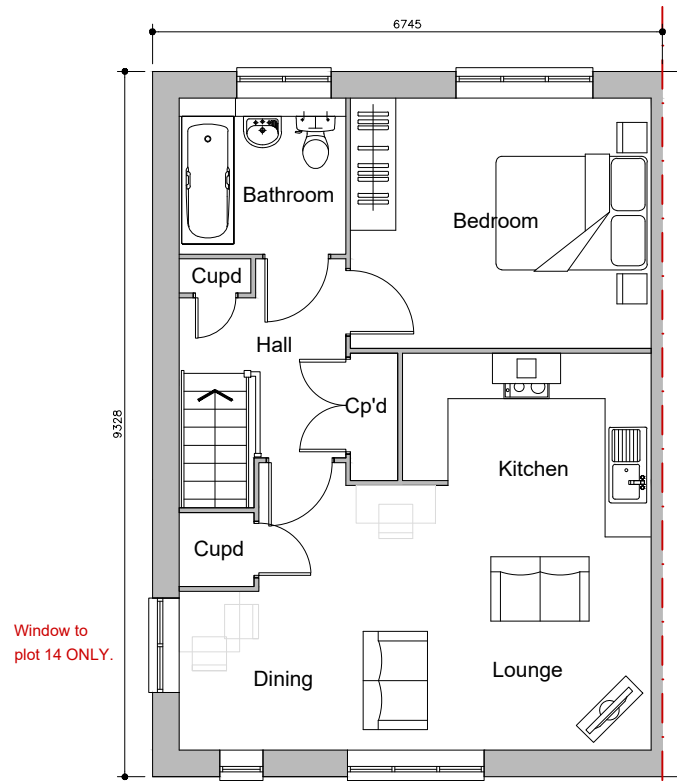
Rear Elevation



End Elevation



Ground Floor Plan



First Floor Plan

**HOUSETYPE DETAILS**  
 Ground Floor 45.5sqm  
 First Floor 56.5sqm  
**90% of NDSS = 45m2**

REV:	DATE:	DESCRIPTION:	BY:
-	12.02.2024	FIRST ISSUE	OKB
SCALE:		SIZE:	
1:100		A3	
PLAN REF:		REV	
		-	

PROJECT:  
 Highall Developments,  
 Halebank Road, Widnes

Type D  
 DRAWING TITLE:  
 Cottage Flats