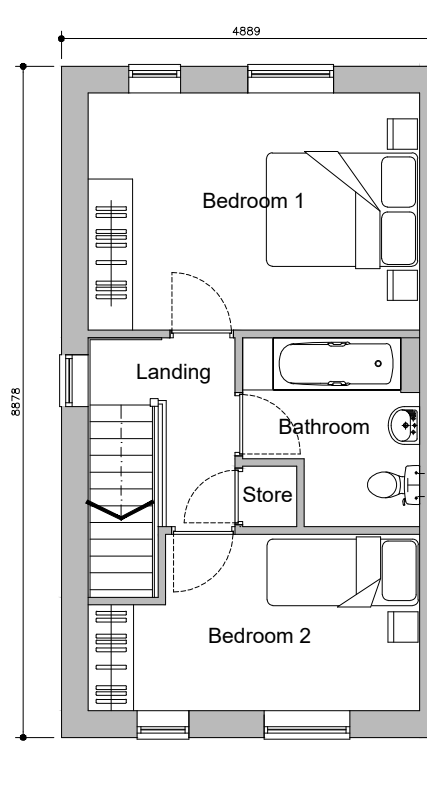


Ground Floor Plan



First Floor Plan

**HOUSETYPE DETAILS**  
 Ground Floor 35.2sqm  
 First Floor 35.2sqm  
**Total 70.4sqm (758sqft)**

**90% of NDSS = 63m<sup>2</sup>**

REV:	DATE:	DESCRIPTION:	BY:
A	26.11.2024	Footprint enlarged	CC
-	12.02.2024	FIRST ISSUE	OKB

PROJECT:

Highall Developments,  
Halebank Road, Widnes

Type A

DRAWING TITLE:

2 Bed End Mews

SCALE:

1:100

PLAN REF:

A-2BEM

SIZE:

A3

REV

A